

# Automate the maintenance of your VB projects

**Have you ever worked on a VB application developed by someone else? Or on an application written 6 months ago? If you have, you know how difficult it is then to make modifications in the code.**

How does this application work? How do you test the application's behavior after you have made a modification, such as modifying the structure of a table? This is all about Impact Analysis ... You know; Those tedious analyses we rarely make. Only they are the only way to reduce the risk of mistakes while maintaining applications and therefore the only way to reduce the costs related to maintenance. Thanks to LeverageIT Technologies you will be able to achieve complete impact analyses on any VB objects in a few clicks (graphical objects, functions, variable...)

LeverageIT Technologies also allows you to quickly explore the application's code (far more quickly than with the VB explorer), it enables you to display the structure of this code and most of all it allows you to generate complete technical documentation for your projects (HTML or RTF format).

Finally LeverageIT Technologies can also audit your code to control the different elements' naming rules and to detect the dead code of the application. This isn't a tool especially dedicated to quality auditing but it has features which can be useful.

## Project Analysis

Before you can explore it, LeverageIT Tools will analyze your code. A wizard will help you declare your project and define the list of VB elements you wish to be analyzed. You may take the elements one by one or import your complete VB project's file. I strongly recommend you to use the latter. LeverageIT Technologies will then launch your project's code analysis. You can then almost instantly explore your code in the Graphical Interface.

## Code Navigation

The graphical interface has three different parts; a tree view, displaying the structure of the application, a "source code" view and a "detail" view displaying information about the element selected.

## The Knowledge Management graphical interface has three different parts

## The tree view

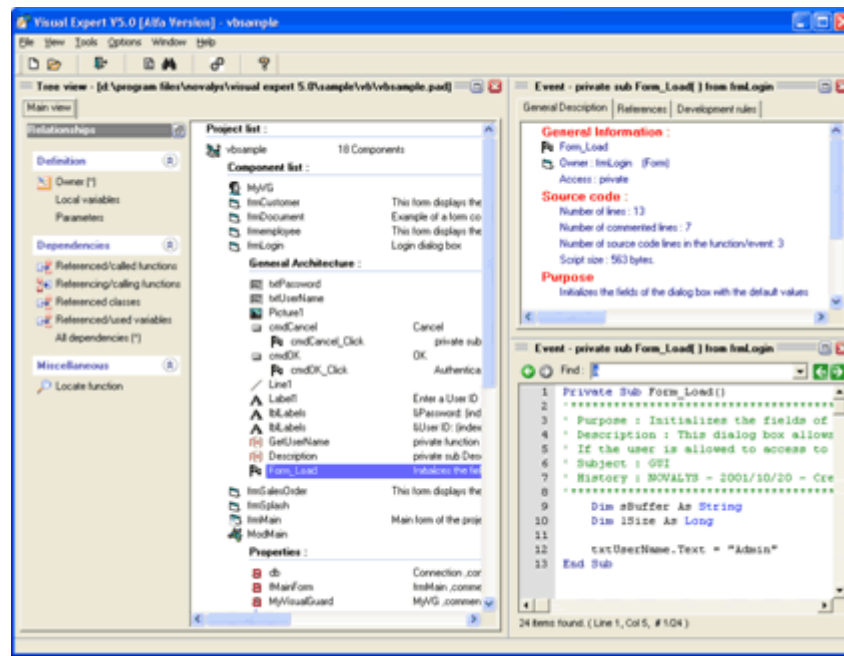
The tree view allows you to navigate in structure of the application: for each item method, a form, a property for example can select one or more links (for example for a method: the method called or the calling method; for a form, the list of controls).

This way of exploring the code is efficient and fast but needs a bit of time to get to (there are several different lists of links offered). Once you have been trained you will never be able to look for "who uses what?" or to locate a method again with LeverageIT Technologies...

Thanks to the tree view Impact analyses are neatly displayed; you will find all the links referring to such property or such method a few clicks ...

## The source code view

The source code's display allows you to navigate in the code of the application directly as you would in an HTML page. code is colored and the referenced methods are hyperlinks.



### The graphical interface has three different parts

If you click on these hyperlinks you will immediately see the method's code. "Next" and "Previous" buttons enable you to come back to code you have already displayed. This view is very useful to navigate directly in the source code of your application.

### The detail view

This view displays information on the element selected in the tree view. This information includes the complete name of the source file, the date of the first modification, the type of components, etc. But you can also find information on the dead code of the application (unused variables, for examples) or again on the quality of the code (see if the naming rules are respected, the use of global variables ...).

The association of these three views is particularly efficient to navigate in the application.

### Conclusion

The LeverageIT analysis tools judiciously completes VB's features. VB is indeed perfectly conceived to develop an application but gives little help on the maintenance aspect.

It is easy to go from an impact analysis to searching for a bug in the code.

Recently I was reading an article saying we spend 50% of the time looking for the code to modify, 30% modifying it and 20% of the time testing it. LeverageIT Technologies allows you to reduce the time spent in the search phase. Also it will give you a better result than whatever you would have found on your own. How much time have I spent in the VB search window!

### Generating technical documentation

LeverageIT Tools provide the ability to automatically generate technical documentation on your application and render the documentation in either RTF format (useful for printing) or HTML (useful to transfer the documentation via Internet). The documentation you obtain is pretty complete.

Not only does it contain classic information about the elements of your application (such as the list of controls and methods) but it gives you information on referenced or referencing components. LeverageIT Technologies will also display the forms or applications and their preview. It is a pity the screenshot should be in the BMP form because the pictures are heavy and non compatible with Netscape.

LeverageIT Technologies can analyze these comments including your own information the documentation (this may remind you Javadoc, for those of you who know Java

You will save precious time using the LeverageIT Technologies.  
Moreover if you are in need of source code documentation for your  
projects our technologies will generate in few minutes what it  
usually takes us days or weeks to finish.

Thanks to the LeverageIT tools you can focus your attention onto  
new project and technologies like VB.NET, Web Services, ...

General Info	info@leverageit.biz
Sales	joe@leverageit.biz
Support	info@leverageit.biz

## Headquarters

50 Paseo Del Sol  
Rancho Santa Margarita, California, 92688  
Hours : Mon - Fri 8:30a.m to 5:00p.m  
Office : 949.709.5511